

# **Data Exchange with GlobalX**

**Stand: 09.12.2020**

---

## System Requirements:

- Session Cookies should be allowed
- Pop-Up Blocker must be disabled

**If these conditions are not met, the data exchange with GlobalX is not possible.**

## Registration:

After you have been created at Grammer's GlobalX, you will receive two e-mails. This mails contain your user-ID, the link to register your password and the link for the future log in to the system.



secure . fast . reliable



### CREATE NEW PASSWORD

User ID:

New password:

Confirm password:

[Show password rules](#)

After creating a new password, you will be redirected to the login page where you can login with the new password.

[Create](#)

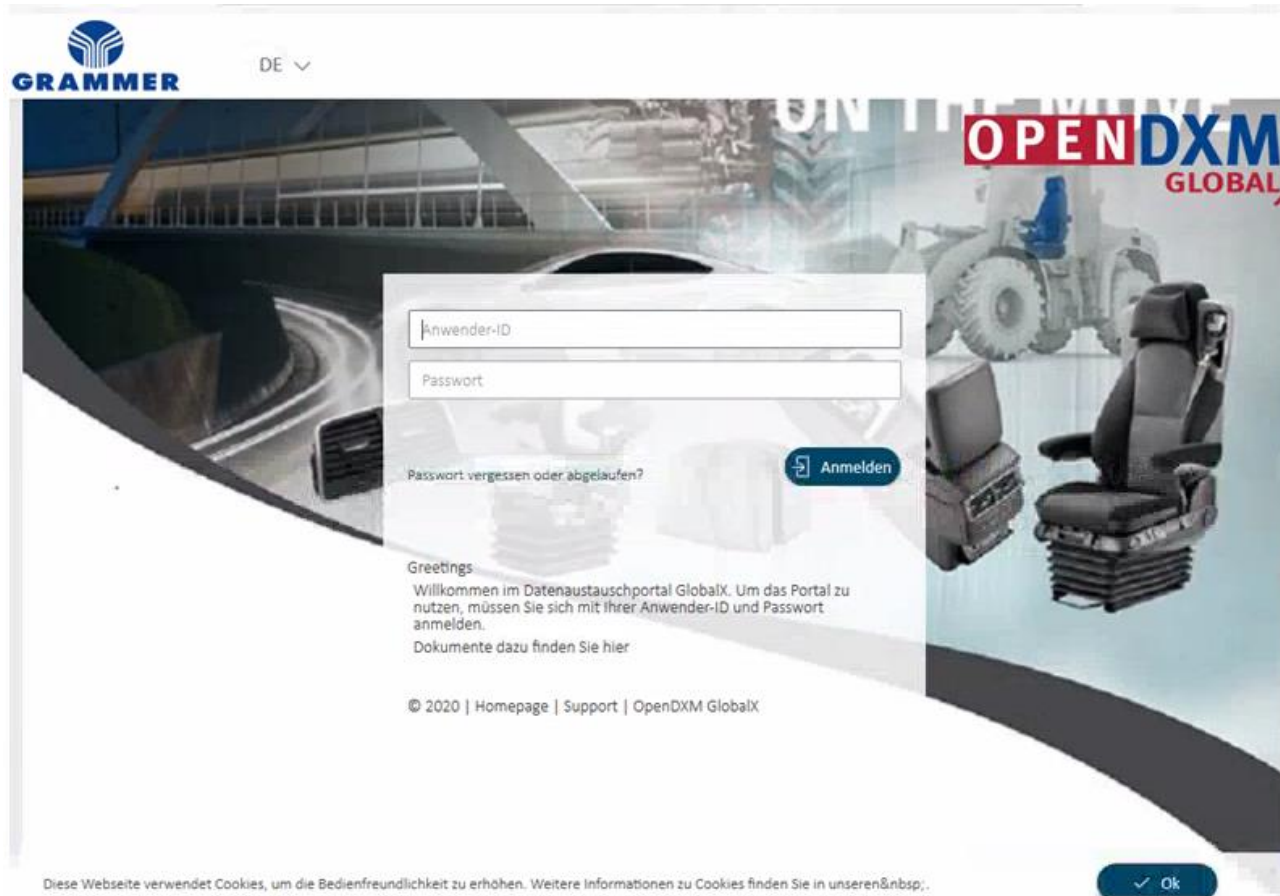
## OpenDXM GlobalX

Welcome to the GlobalX portal. To use the portal, you have to login here with your userid and password.

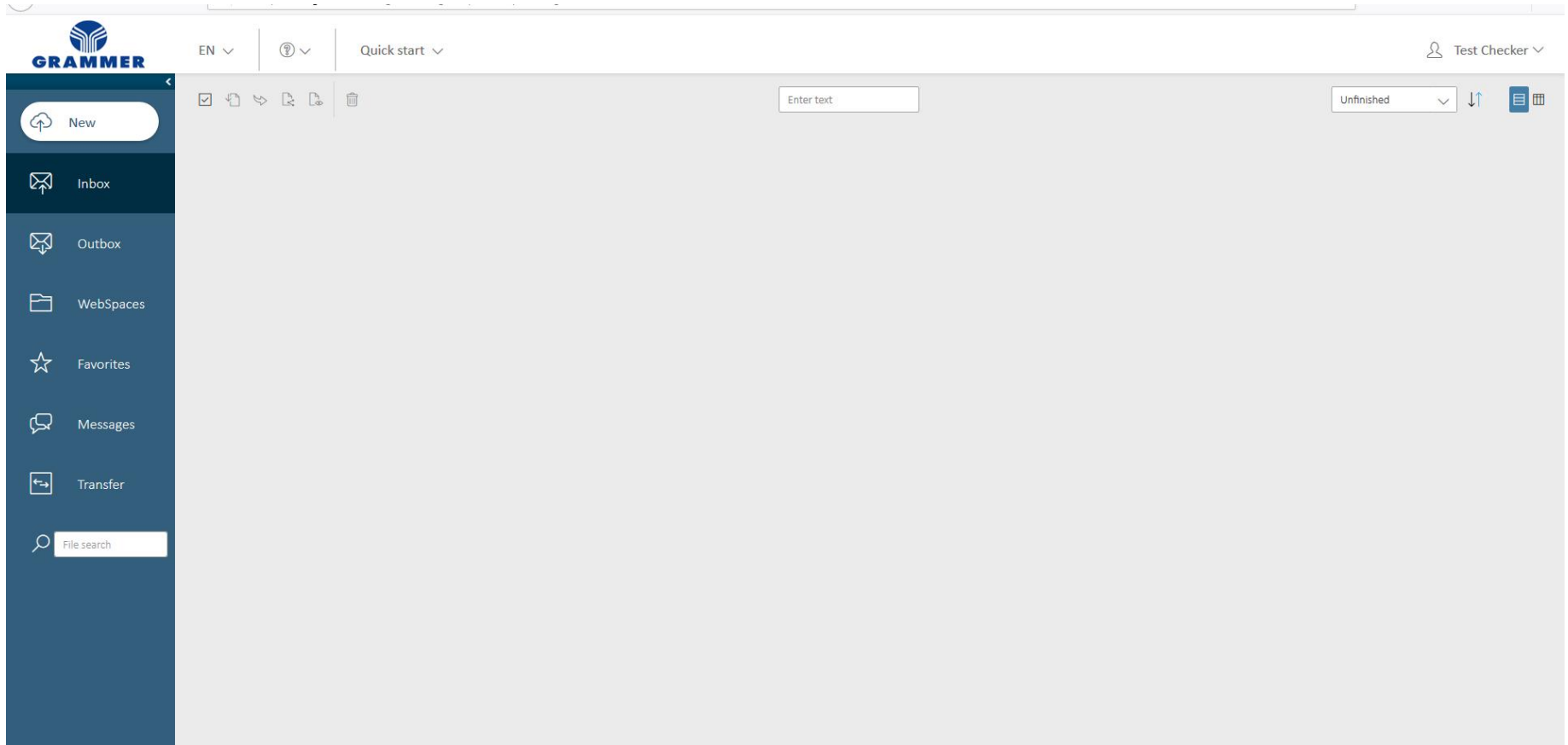
Documente can be found [here](#)



<https://dex.grammer.com/globalx-ui>

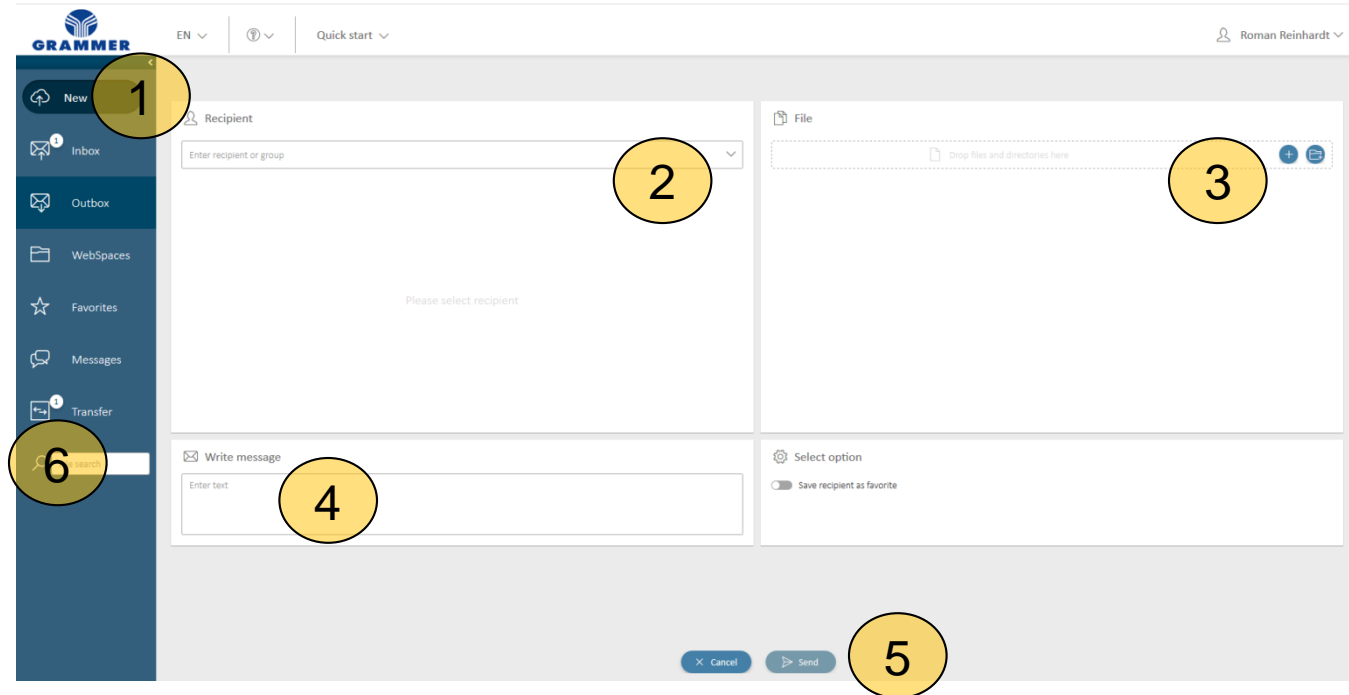


# GlobalX after your login



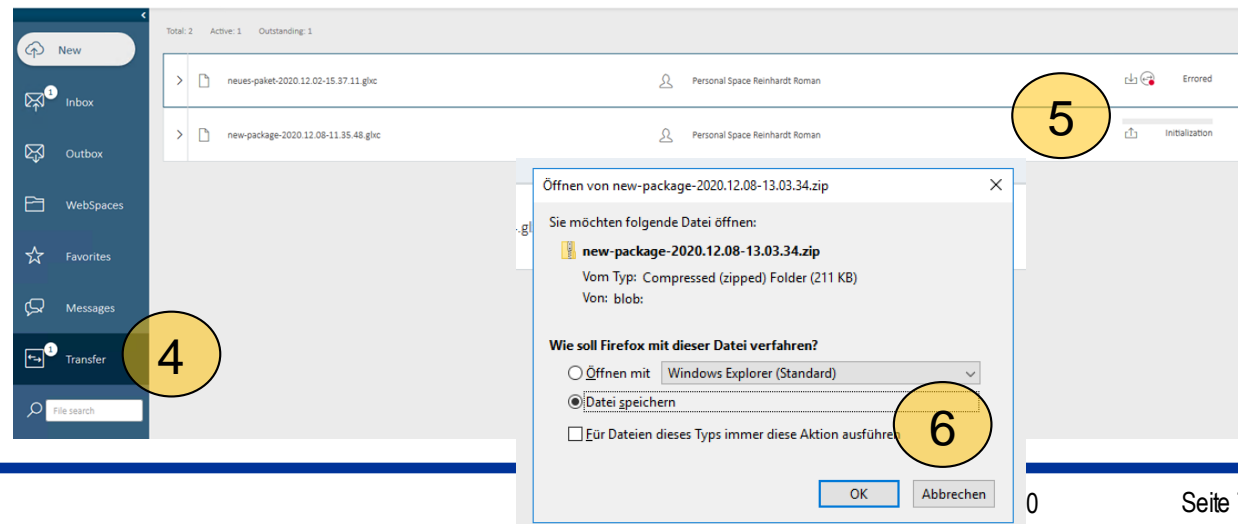
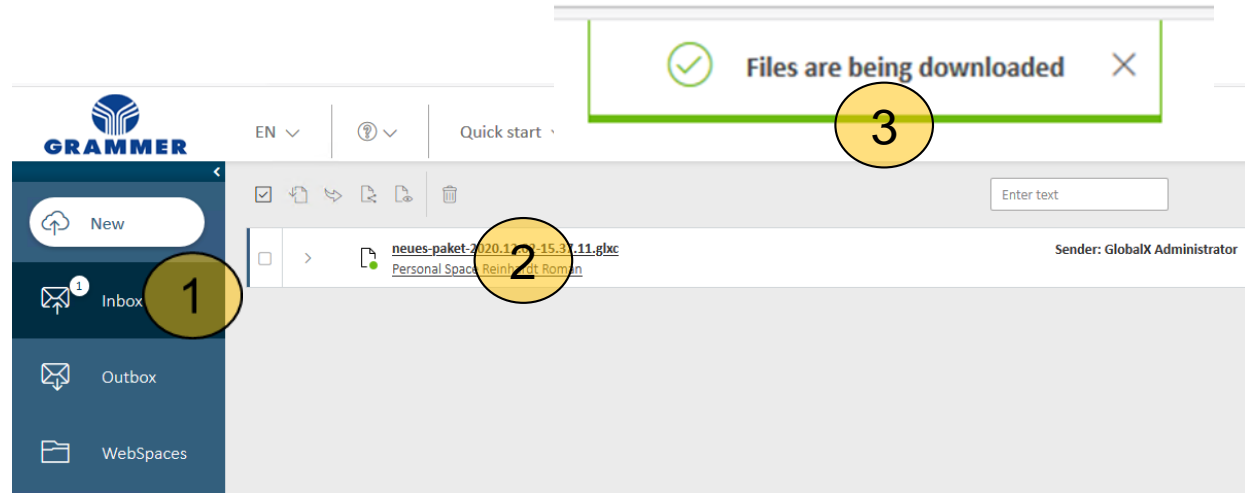
# Send data to GRAMMER

1. Click on **NEW**
2. Select Receiver
3. Select Data
4. Enter a message
5. Click on **Send**
6. **Transfer** shows the progress of the data transfer

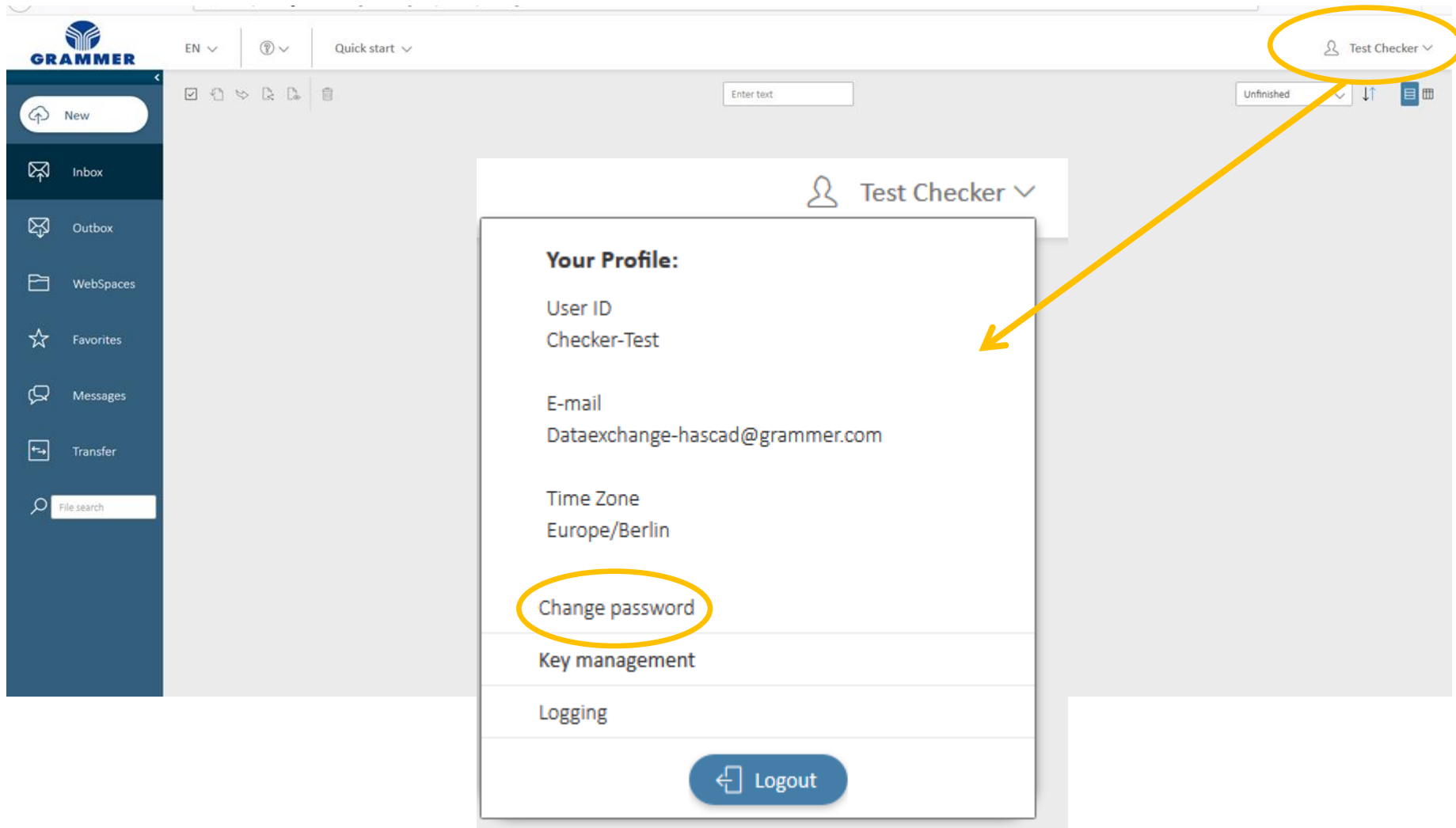


# Download data from GRAMMER

1. Click on **Inbox**
2. Click on the job you need in the list
3. Information: Data will be downloaded
4. Click on **Transfer**
5. The progress of the download, decryption and extraction is shown here
6. As soon as the download is complete, you can specify where you want to save the data



# Change Password



The screenshot shows the GRAMMER user interface. At the top right, the user name "Test Checker" is circled in yellow. A yellow arrow points from this user name to the "Change password" option in the user profile dropdown menu. The profile menu is titled "Your Profile:" and lists the following information:

- User ID: Checker-Test
- E-mail: Dataexchange-hascad@grammer.com
- Time Zone: Europe/Berlin

The "Change password" option is circled in yellow. Below it are "Key management" and "Logging" options. At the bottom of the menu is a "Logout" button.



Dataexchange-hascad@grammer.com